

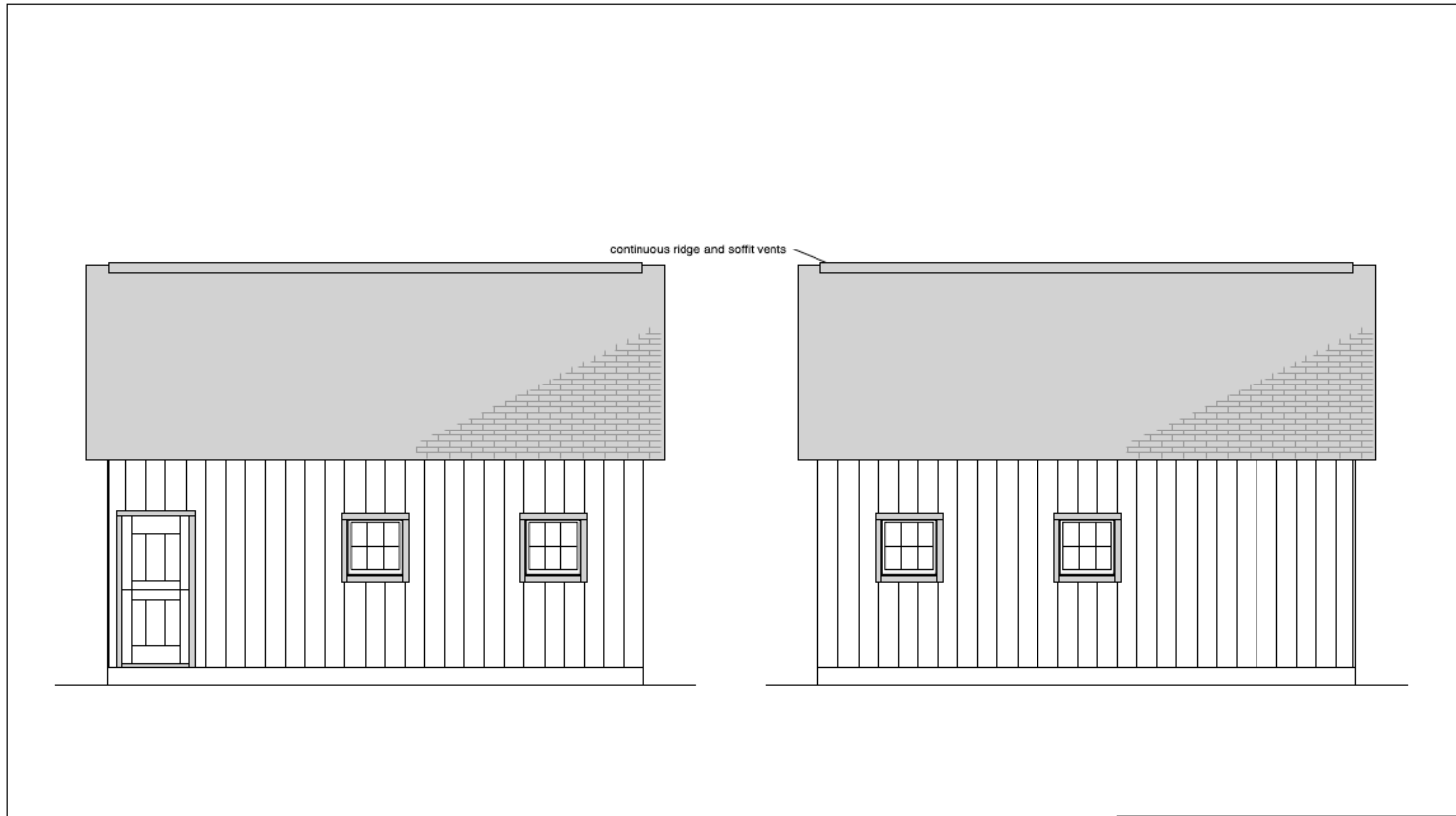
THIS DRAWING PACKAGE ILLUSTRATES THE FEATURES AND DETAILS OF THE SHELTER-KIT BUILDING DESCRIBED AND IS PROVIDED FOR THE OWNER NAMED. IT IS NOT TO BE USED TO SPECIFY MATERIALS, DIMENSIONS OR DESIGN VALUES FOR THE CONSTRUCTION OF ANY OTHER BUILDING OR COPY OF THIS KIT.

Copyright Shelter-Kit Incorporated 2019

SHEET # 2

Shelter-Kit Incorporated
1 East Main Street
Warner, NH 03278

H-088
16'X24' Barn
First & Second
Floor Plan
1/4"=1' rev.2
15APR11 LMF



THIS DRAWING PACKAGE ILLUSTRATES THE FEATURES AND DETAILS OF THE SHELTER-KIT BUILDING DESCRIBED AND IS PROVIDED FOR THE OWNER NAMED. IT IS NOT TO BE USED TO SPECIFY MATERIALS, DIMENSIONS OR DESIGN VALUES FOR THE CONSTRUCTION OF ANY OTHER BUILDING OR COPY OF THIS KIT.

Copyright Shelter-Kit Incorporated 2019

SHEET # 6

Shelter-Kit Incorporated
1 East Main Street
Warner, NH 03278

H-088
16'X24' Barn
Left & Right Elevation
1/4"=1' rev.2
15APR11 LMF

Roofing
 mfg. BP Canada
 model Everest
 color to be determined

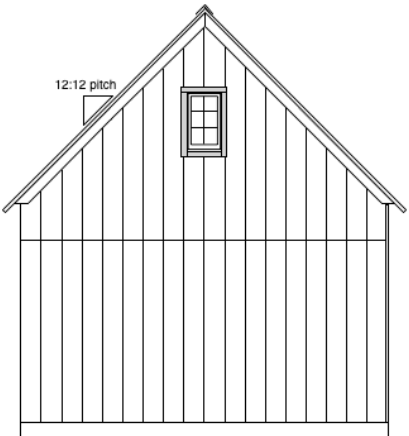
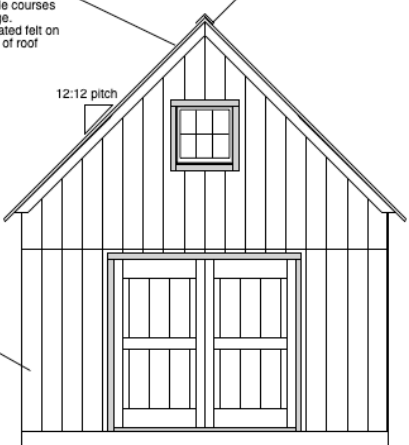
IKO Water Barrier
 Two 3' wide courses
 at drip edge.
 15lb saturated felt on
 remainder of roof

continuous ridge and soffit vents

12:12 pitch

12:12 pitch

1" x 12" Eastern White Pine
 Shiplap siding



THIS DRAWING PACKAGE ILLUSTRATES THE FEATURES AND DETAILS OF THE SHELTER-KIT BUILDING DESCRIBED AND IS PROVIDED FOR THE OWNER NAMED. IT IS NOT TO BE USED TO SPECIFY MATERIALS, DIMENSIONS OR DESIGN VALUES FOR THE CONSTRUCTION OF ANY OTHER BUILDING OR COPY OF THIS KIT.

Copyright Shelter-Kit Incorporated 2019

SHEET # 4

Shelter-Kit Incorporated
 1 East Main Street
 Warner, NH 03278

H-088
 16'X24' Barn
 Front & Rear Elevation
 1/4"=1' rev.2
 15APR11 LMF