

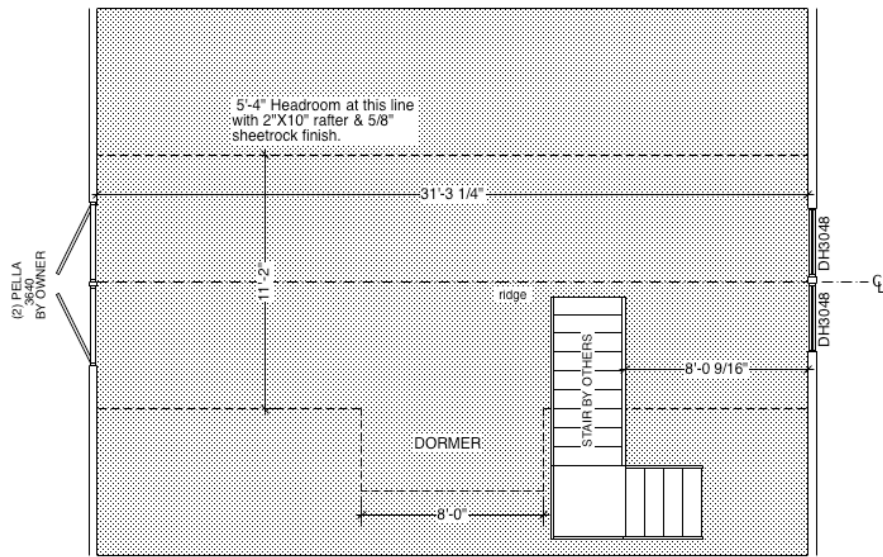
THIS DRAWING PACKAGE ILLUSTRATES THE FEATURES AND DETAILS OF THE SHELTER-KIT BUILDING DESCRIBED AND IS PROVIDED FOR THE OWNER NAMED. IT IS NOT TO BE USED TO SPECIFY MATERIALS, DIMENSIONS OR DESIGN VALUES FOR THE CONSTRUCTION OF ANY OTHER BUILDING OR COPY OF THIS KIT.

Copyright © Shelter-Kit Incorporated 2016

SHEET # 2

Shelter-Kit Incorporated
1 East Main Street
Warner, NH 03278

S-130
24'X32' Barn
First Floor Plan
1/4"=1' 18OCT10
LMF rev 3



Approximately 350 Sq. Ft.
useable floor area

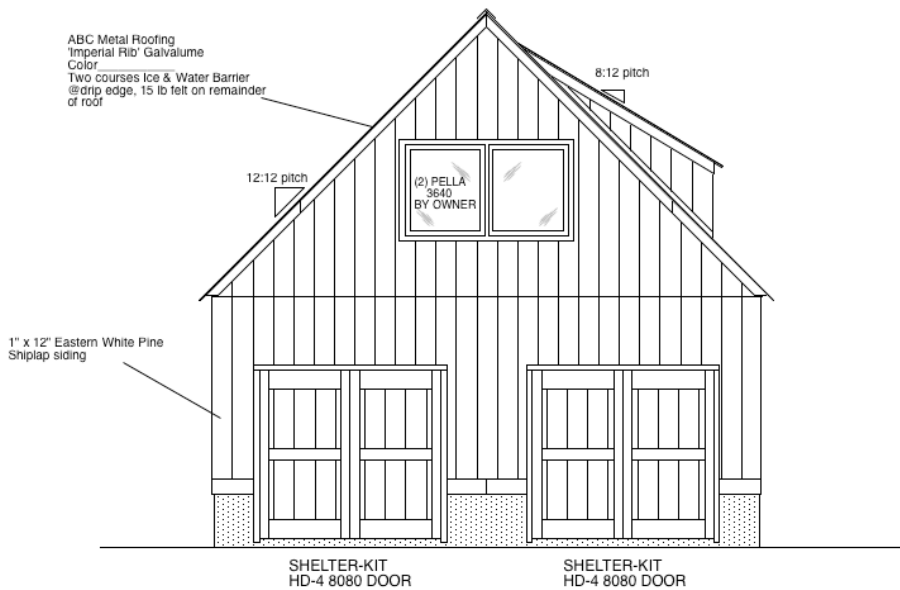
THIS DRAWING PACKAGE ILLUSTRATES THE FEATURES AND DETAILS OF THE SHELTER-KIT BUILDING DESCRIBED AND IS PROVIDED FOR THE OWNER NAMED. IT IS NOT TO BE USED TO SPECIFY MATERIALS, DIMENSIONS OR DESIGN VALUES FOR THE CONSTRUCTION OF ANY OTHER BUILDING OR COPY OF THIS KIT.

Copyright © Shelter-Kit Incorporated 2016

SHEET # 3

Shelter-Kit Incorporated
1 East Main Street
Warner, NH 03278

S-130
24'X32' Barn
Loft Floor Plan
1/4"=1' 18OCT10
LMF rev 3



THIS DRAWING PACKAGE ILLUSTRATES THE FEATURES AND DETAILS OF THE SHELTER-KIT BUILDING DESCRIBED AND IS PROVIDED FOR THE OWNER NAMED. IT IS NOT TO BE USED TO SPECIFY MATERIALS, DIMENSIONS OR DESIGN VALUES FOR THE CONSTRUCTION OF ANY OTHER BUILDING OR COPY OF THIS KIT.

Copyright © Shelter-Kit Incorporated 2016

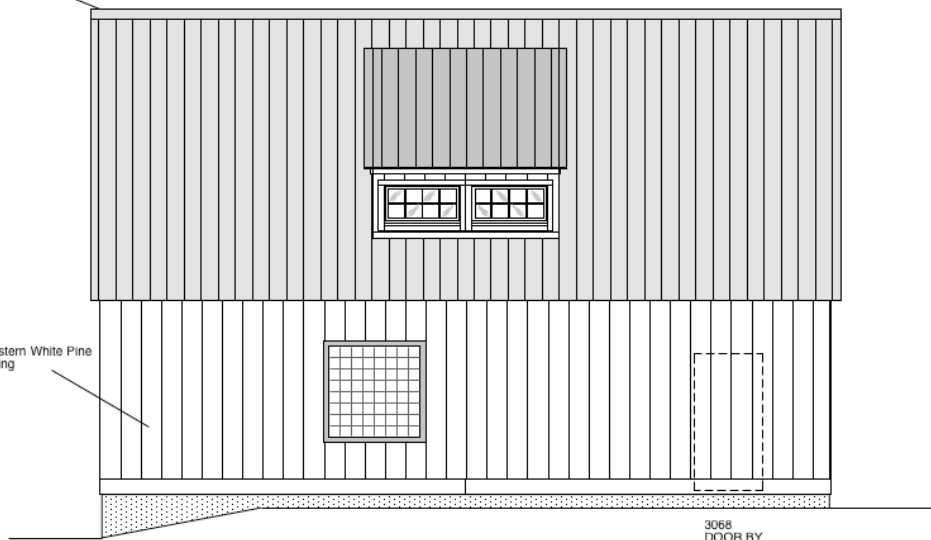
SHEET # 4

Shelter-Kit Incorporated
 1 East Main Street
 Warner, NH 03278

S-130
 24'X32' Barn
 Front Elevation
 1/4"=1' 12JUL08
 LMF

continuous ridge and soffit vents

1" x 12" Eastern White Pine
Shiplap siding



3068
DOOR BY
OWNER

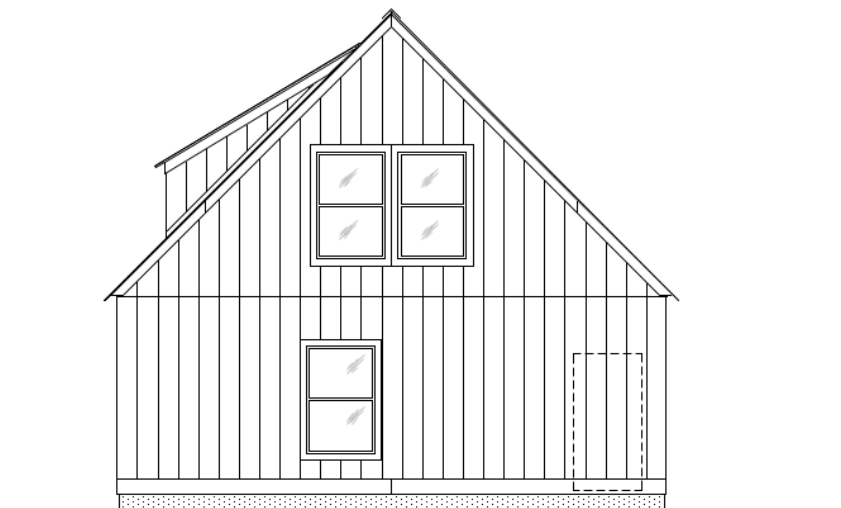
THIS DRAWING PACKAGE ILLUSTRATES THE FEATURES AND DETAILS OF THE SHELTER-KIT BUILDING DESCRIBED AND IS PROVIDED FOR THE OWNER NAMED. IT IS NOT TO BE USED TO SPECIFY MATERIALS, DIMENSIONS OR DESIGN VALUES FOR THE CONSTRUCTION OF ANY OTHER BUILDING OR COPY OF THIS KIT.

Copyright © Shelter-Kit Incorporated 2016

SHEET # 6

Shelter-Kit Incorporated
1 East Main Street
Warner, NH 03278

S-130
24'X32' Barn
Left Elevation
1/4"=1' 3SEP10
LMF



(3) Coastal Industries
S/610 Vinyl Double Hung
windows, Low E, Argon

3068
DOOR BY
OWNER

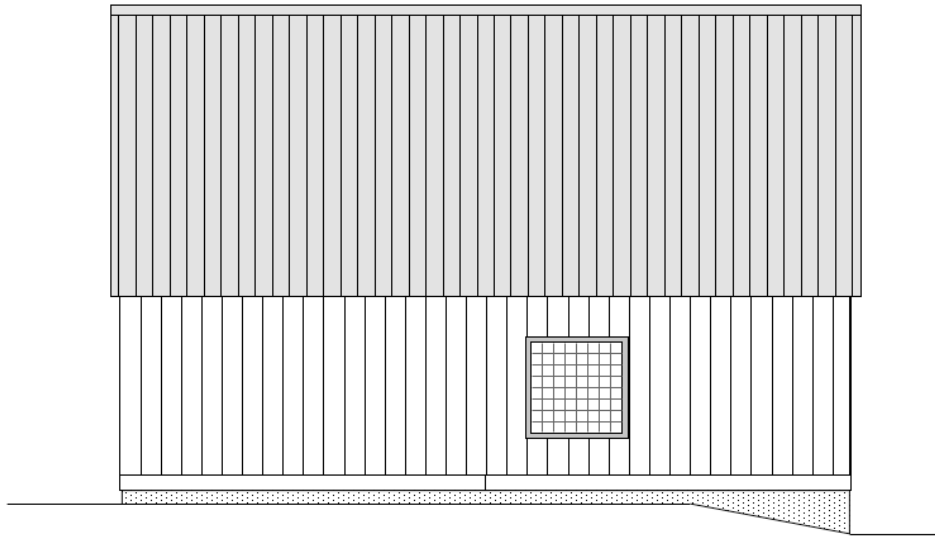
THIS DRAWING PACKAGE ILLUSTRATES THE FEATURES AND DETAILS OF THE SHELTER-KIT BUILDING DESCRIBED AND IS PROVIDED FOR THE OWNER NAMED. IT IS NOT TO BE USED TO SPECIFY MATERIALS, DIMENSIONS OR DESIGN VALUES FOR THE CONSTRUCTION OF ANY OTHER BUILDING OR COPY OF THIS KIT.

Copyright © Shelter-Kit Incorporated 2016

SHEET # 5

Shelter-Kit Incorporated
1 East Main Street
Warner, NH 03278

S-130
24'X32' Barn
Rear Elevation
1/4"=1' 3SEP10
LMF



THIS DRAWING PACKAGE ILLUSTRATES THE FEATURES AND DETAILS OF THE SHELTER-KIT BUILDING DESCRIBED AND IS PROVIDED FOR THE OWNER NAMED. IT IS NOT TO BE USED TO SPECIFY MATERIALS, DIMENSIONS OR DESIGN VALUES FOR THE CONSTRUCTION OF ANY OTHER BUILDING OR COPY OF THIS KIT.

Copyright © Shelter-Kit Incorporated 2016

SHEET # 7

Shelter-Kit Incorporated
1 East Main Street
Warner, NH 03278

S-130
24'X32' Barn
Right Elevation
1/4"=1' 3SEP10
LMF