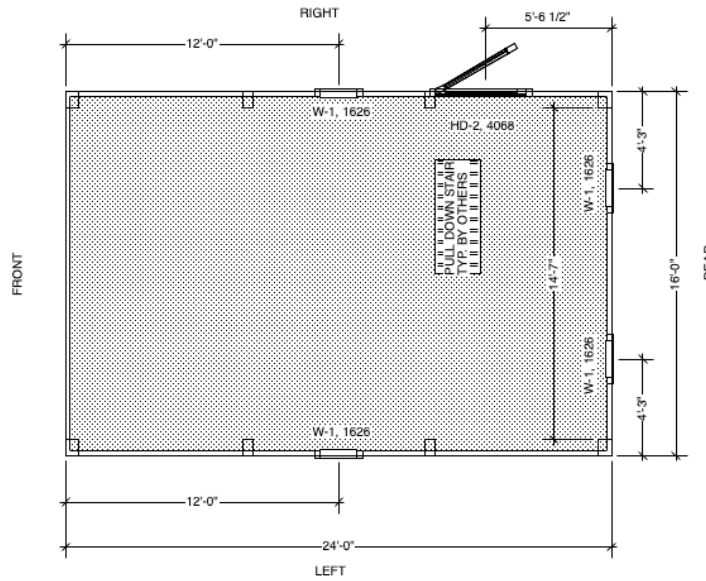


THE DESIGNATIONS; LEFT, RIGHT, FRONT AND REAR INDICATE THE ORIENTATION OF THE PARTS OF THE KIT AS PRODUCED. USE THESE TERMS EXCLUSIVELY DURING THE PLANNING AND ASSEMBLY OF THE BARN, REGARDLESS OF HOW THE BARN IS FACING ON YOUR SITE.

ORIENTATION OF THE BARN ON THE SITE MUST BE DETERMINED BY ALIGNING ONE WALL OF THE BARN WITH AN EXISTING FEATURE ON THE SITE.



THIS DRAWING PACKAGE ILLUSTRATES THE FEATURES AND DETAILS OF THE SHELTER-KIT BARN DESCRIBED, AND IS PROVIDED FOR THE PURPOSES OF PERMITTING, AND ESTIMATING LABOR AND FINISHING COSTS FOR THE COMPLETION OF ONE BARN KIT.

IT IS NOT TO BE USED AS A CONSTRUCTION DRAWING FOR ASSEMBLY OF THE KIT PROVIDED BY SHELTER-KIT, OR TO SPECIFY MATERIALS, DIMENSIONS OR DESIGN VALUES FOR THE CONSTRUCTION OF ANY OTHER BUILDING OR COPY OF THIS KIT.

Copyright Shelter-Kit Incorporated 2019

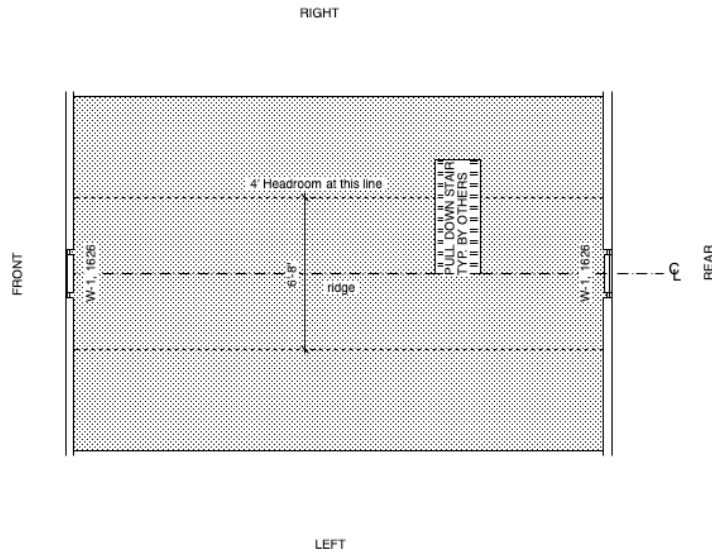
SHEET # 2

Shelter-Kit Incorporated  
1 East Main Street  
Warner, NH 03278

U-037  
16'X24' Barn  
First Floor Plan Rev.  
1/4"=1'  
21NOV05 LMF

THE DESIGNATIONS; LEFT, RIGHT, FRONT AND REAR INDICATE THE ORIENTATION OF THE PARTS OF THE KIT AS PRODUCED. USE THESE TERMS EXCLUSIVELY DURING THE PLANNING AND ASSEMBLY OF THE BARN, REGARDLESS OF HOW THE BARN IS FACING ON YOUR SITE.

ORIENTATION OF THE BARN ON THE SITE MUST BE DETERMINED BY ALIGNING ONE WALL OF THE BARN WITH AN EXISTING FEATURE ON THE SITE.



LEFT  
Approximately 155 Sq. Ft.  
useable floor area

THIS DRAWING PACKAGE ILLUSTRATES THE FEATURES AND DETAILS OF THE SHELTER-KIT BARN DESCRIBED, AND IS PROVIDED FOR THE PURPOSES OF PERMITTING, AND ESTIMATING LABOR AND FINISHING COSTS FOR THE COMPLETION OF ONE BARN KIT.

IT IS NOT TO BE USED AS A CONSTRUCTION DRAWING FOR ASSEMBLY OF THE KIT PROVIDED BY SHELTER-KIT, OR TO SPECIFY MATERIALS, DIMENSIONS OR DESIGN VALUES FOR THE CONSTRUCTION OF ANY OTHER BUILDING OR COPY OF THIS KIT.

Copyright Shelter-Kit Incorporated 2019

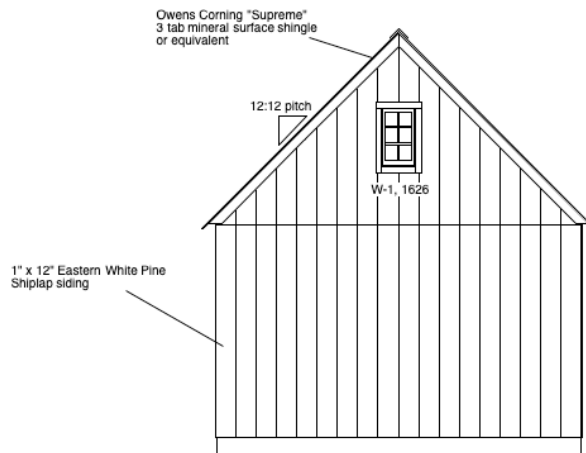
SHEET # 3

Shelter-Kit Incorporated  
1 East Main Street  
Warner, NH 03278

U-037  
16'X24' Barn  
Loft Floor Plan Rev.  
1/4"=1'  
21NOV05 LMF

THE DESIGNATIONS, LEFT, RIGHT, FRONT AND REAR INDICATE THE ORIENTATION OF THE PARTS OF THE KIT AS PRODUCED. USE THESE TERMS EXCLUSIVELY DURING THE PLANNING AND ASSEMBLY OF THE BARN, REGARDLESS OF HOW THE BARN IS FACING ON YOUR SITE.

ORIENTATION OF THE BARN ON THE SITE MUST BE DETERMINED BY ALIGNING ONE WALL OF THE BARN WITH AN EXISTING FEATURE ON THE SITE.



THIS DRAWING PACKAGE ILLUSTRATES THE FEATURES AND DETAILS OF THE SHELTER-KIT BARN DESCRIBED, AND IS PROVIDED FOR THE PURPOSES OF PERMITTING, AND ESTIMATING LABOR AND FINISHING COSTS FOR THE COMPLETION OF ONE BARN KIT.

IT IS NOT TO BE USED AS A CONSTRUCTION DRAWING FOR ASSEMBLY OF THE KIT PROVIDED BY SHELTER-KIT, OR TO SPECIFY MATERIALS, DIMENSIONS OR DESIGN VALUES FOR THE CONSTRUCTION OF ANY OTHER BUILDING OR COPY OF THIS KIT.

Copyright Shelter-Kit Incorporated 2019

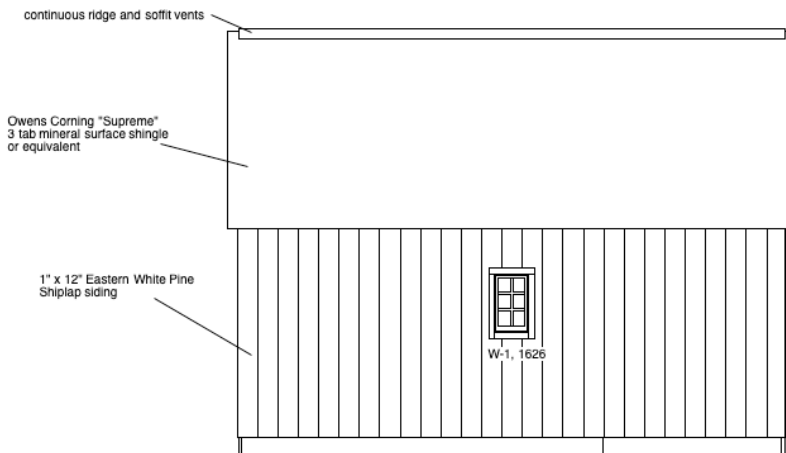
SHEET # 4

Shelter-Kit Incorporated  
1 East Main Street  
Warner, NH 03278

U-037  
16'X24' Barn  
Front Elevation Rev.  
1/4"=1'  
21NOV05 LMF

THE DESIGNATIONS; LEFT, RIGHT, FRONT AND REAR INDICATE THE ORIENTATION OF THE PARTS OF THE KIT AS PRODUCED. USE THESE TERMS EXCLUSIVELY DURING THE PLANNING AND ASSEMBLY OF THE BARN, REGARDLESS OF HOW THE BARN IS FACING ON YOUR SITE.

ORIENTATION OF THE BARN ON THE SITE MUST BE DETERMINED BY ALIGNING ONE WALL OF THE BARN WITH AN EXISTING FEATURE ON THE SITE.



THIS DRAWING PACKAGE ILLUSTRATES THE FEATURES AND DETAILS OF THE SHELTER-KIT BARN DESCRIBED, AND IS PROVIDED FOR THE PURPOSES OF PERMITTING, AND ESTIMATING LABOR AND FINISHING COSTS FOR THE COMPLETION OF ONE BARN KIT.

IT IS NOT TO BE USED AS A CONSTRUCTION DRAWING FOR ASSEMBLY OF THE KIT PROVIDED BY SHELTER-KIT, OR TO SPECIFY MATERIALS, DIMENSIONS OR DESIGN VALUES FOR THE CONSTRUCTION OF ANY OTHER BUILDING OR COPY OF THIS KIT.

Copyright Shelter-Kit Incorporated 2019

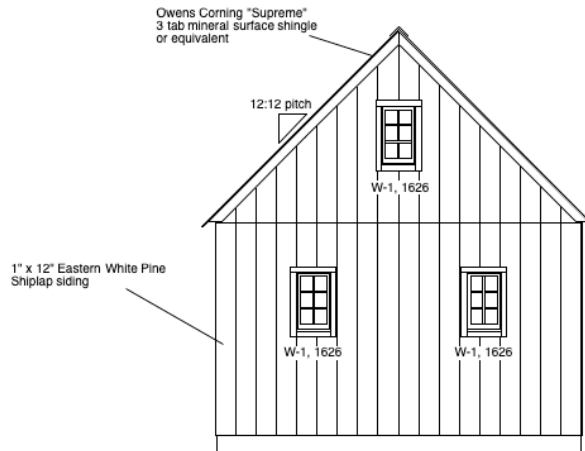
SHEET # 6

Shelter-Kit Incorporated  
1 East Main Street  
Warner, NH 03278

U-037  
16'X24' Barn  
Left Elevation Rev.  
1/4"=1'  
21NOV05 LMF

THE DESIGNATIONS; LEFT, RIGHT, FRONT AND REAR INDICATE THE ORIENTATION OF THE PARTS OF THE KIT AS PRODUCED. USE THESE TERMS EXCLUSIVELY DURING THE PLANNING AND ASSEMBLY OF THE BARN, REGARDLESS OF HOW THE BARN IS FACING ON YOUR SITE.

ORIENTATION OF THE BARN ON THE SITE MUST BE DETERMINED BY ALIGNING ONE WALL OF THE BARN WITH AN EXISTING FEATURE ON THE SITE.



THIS DRAWING PACKAGE ILLUSTRATES THE FEATURES AND DETAILS OF THE SHELTER-KIT BARN DESCRIBED, AND IS PROVIDED FOR THE PURPOSES OF PERMITTING, AND ESTIMATING LABOR AND FINISHING COSTS FOR THE COMPLETION OF ONE BARN KIT.

IT IS NOT TO BE USED AS A CONSTRUCTION DRAWING FOR ASSEMBLY OF THE KIT PROVIDED BY SHELTER-KIT, OR TO SPECIFY MATERIALS, DIMENSIONS OR DESIGN VALUES FOR THE CONSTRUCTION OF ANY OTHER BUILDING OR COPY OF THIS KIT.

Copyright Shelter-Kit Incorporated 2019

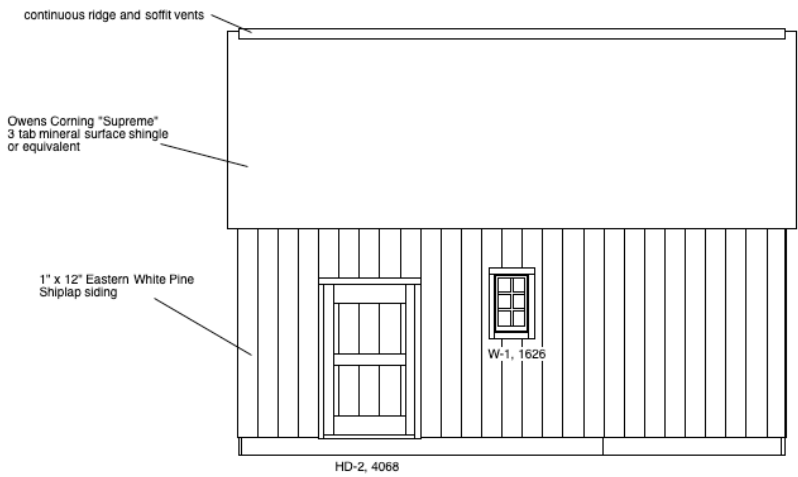
SHEET # 5

Shelter-Kit Incorporated  
1 East Main Street  
Warner, NH 03278

U-037  
16'X24' Barn  
Rear Elevation Rev.  
1/4"=1'  
21NOV05 LMF

THE DESIGNATIONS; LEFT, RIGHT, FRONT AND REAR INDICATE THE ORIENTATION OF THE PARTS OF THE KIT AS PRODUCED. USE THESE TERMS EXCLUSIVELY DURING THE PLANNING AND ASSEMBLY OF THE BARN, REGARDLESS OF HOW THE BARN IS FACING ON YOUR SITE.

ORIENTATION OF THE BARN ON THE SITE MUST BE DETERMINED BY ALIGNING ONE WALL OF THE BARN WITH AN EXISTING FEATURE ON THE SITE.



THIS DRAWING PACKAGE ILLUSTRATES THE FEATURES AND DETAILS OF THE SHELTER-KIT BARN DESCRIBED, AND IS PROVIDED FOR THE PURPOSES OF PERMITTING, AND ESTIMATING LABOR AND FINISHING COSTS FOR THE COMPLETION OF ONE BARN KIT.

IT IS NOT TO BE USED AS A CONSTRUCTION DRAWING FOR ASSEMBLY OF THE KIT PROVIDED BY SHELTER-KIT, OR TO SPECIFY MATERIALS, DIMENSIONS OR DESIGN VALUES FOR THE CONSTRUCTION OF ANY OTHER BUILDING OR COPY OF THIS KIT.

Copyright Shelter-Kit Incorporated 2019

SHEET # 7

Shelter-Kit Incorporated  
1 East Main Street  
Warner, NH 03278

U-037  
16'X24' Barn  
Right Elevation Rev.  
1/4"=1'  
21NOV05 LMF